

## Williamson County Schools Early Learning Programs

### Community Connection

Resource Newsletter, Fall 2025



### Strengthening Children, Families, & Communities

WCS is dedicated to fostering growth and resilience in our youngest learners by providing quality educational services, engaging and supporting families, and engaging with community partners. The school social worker often provides a link between the school, home, and community. This newsletter offers families helpful information about early childhood as well as possible resources in the community.



### An Inclusive Halloween: The Meaning of a Blue Pumpkin

You may see blue pumpkins this Halloween, which serve as a simple, nonverbal signal for autism awareness. They can indicate that a trick-or-treater is on the autism spectrum and may be nonverbal or have sensory sensitivities.

By recognizing this symbol, we can all practice more patience and understanding toward every child. Creating a safe, welcoming, and sensory-friendly environment ensures that every child can enjoy the holiday.

# Community Connection: Resources

Fall 2025



## Upcoming Fall Events:

**Get Down for Down Syndrome:** This event will help raise crucial funds that allow GiGi's Playhouse Nashville to provide 100% FREE educational, therapeutic-based, and career development programs for individuals with Down syndrome and their families.

**Therapeutics Recreation Night: Fall Festival Dance and Hayride:** This is an inclusive fall celebration on October 16th. Guests can take part in a hayride, enjoy dinner, and dance to a live DJ. The event is designed for participants of the PALS Program, ensuring accessibility for those who need caregiver support.

**Sensory Spooktacular:** This sensory-friendly Halloween event for children of all abilities is hosted by We Rock the Spectrum-Franklin TN, Williamson County. It features a mobile sensory room, sensory tables, and Halloween activities.

**Pajama Walk:** The AutismTN Pajama Walk returns to Shelby Park, bringing a morning filled with movement, connection, and purpose. Families and adults can enjoy a sensory-friendly walk, face painter, balloon artist, and resource fair to meet new friends while making community connections.

## Disability Resources:

**TN Dept of Intellectual & Developmental Disabilities:**

**The Arc of Williamson County:**

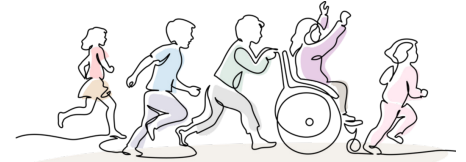
**Katie Beckett Waiver:** provides services and/or helps pay for medical care not covered by insurance. For children, not eligible for medicaid, with a disability.

**Supplemental Security Income (SSI):** pays monthly benefits to people with limited income/resources.

**TN Disability Pathfinder:** a search engine of disability resources/services in TN.

**Kid Central TN:** is an educational resource for families.

**Autism TN:** provides educations, support, and advocacy for individuals with Autism and their families.



## Community Connection: Resources



Fall 2025



### Food/Clothing/Finances:

Supplemental Nutrition Assistance (SNAP)  
Women Infants & Children (WIC)

GraceWorks

One Generation Away

Nolensville Food Pantry

The Well Outreach

The Pantry at Spring Meadows

Mid-Cumberland Action Center

Goodwill



[Click for More Information](#)

### Emergency & Crisis:

Tennessee Crisis/Suicide Prevention: 24/7 Call or text 988 or dial 1-855-274-7471.

National Domestic Violence Hotline: call 1-800-799-7233, or if you are unable to speak safely, you can text LOVEIS to 22522.

Crisis Text Line: Text HOME to 741741.

Autism TN HelpLine: Call /text 615-270-2077 Crisis Chat Now.

*For additional resources or support, please contact WCS School Social Worker Erin McCloud, LCSW at [erin.mccloud@wcs.edu](mailto:erin.mccloud@wcs.edu) or 615-472-4998.*

*WCS does not endorse any specific resource or event. This list is provided for informational purposes only.*