

**ADDENDUM NO. 2**

**DATE:** May 8, 2026

**PROJECT:** Special Education Alterations to  
Centennial High School  
Williamson County Schools  
J+B No. 2519  
WCS RFB #1408

**ARCHITECT:** Johnson + Bailey Architects, P.C.  
City Center, Suite 700  
100 East Vine Street  
Murfreesboro, TN. 37130



The following Addendum adds to, corrects, or supersedes Contract Documents dated March 10, 2026, Addendum No. 1 dated May 4, 2026, and is as follows:

**CHANGES TO THE SPECIFICATIONS**

---

**SECTION 00 01 10 - TABLE OF CONTENTS**

**REFERENCE:** Page 1, DIVISION 01

**ADD** "DIVISION 01 - SECTION 01 21 13 CASH ALLOWANCES.....1"

**SECTION 01 21 13 -**

**ADD:** The attached specification 01 21 13 CASH ALLOWANCES dated May 8, 2026 (1 page).

**CHANGES TO THE DRAWINGS**

---

**DRAWING A9.2**

**REFERENCE:** ENTIRE SHEET

**ADD:** Door Finish Hardware Sets as shown on the attached revised drawing A9.2 dated 05/08/26.

**REFERENCE:** DOOR SCHEDULE

**Revise:** Door Schedule in its entirety as shown on the attached revised drawing A9.2 dated 05/08/26.

**REFERENCE:** DOOR FRAME TYPES

**Revise:** Door frame types as shown on the attached revised drawing A9.2 dated 05/08/26.

ADDENDUM NO. 2  
Special Education Alterations to  
Centennial High School  
Williamson County Schools  
J+B No. 2519  
WCS RFB #1408  
May 8, 2026  
Page 2

**DRAWING E201**

**REFERENCE: ENTIRE SHEET**

ADD: General Power/Systems Plan Note to read as Follows:

“ELECTRICAL CONTRACTOR TO PROVIDE LOW VOLTAGE  
PATHWAYS/CONDUIT AND BOXES AT NEW CROSS-  
CORRIDOR DOOR OPENINGS WITH ELECTRONIC  
HARDWARE AND ACCESS CONTROL DEVICES - SEE  
DRAWING A9.2 FOR REQUIREMENTS.”

- END OF ADDENDUM -

ATTACHMENTS: Specification Section 01 21 13 CASH ALLOWANCES dated 05-08-26  
Drawing A9.2 dated 05-08-26

## **SECTION 01 21 13 CASH ALLOWANCES**

### **PART 1 - GENERAL**

- 1.1 Article 3.8 Allowances of AIA Document A201, GENERAL CONDITIONS OF THE CONTRACT FOR CONSTRUCTION, bound herein, is applicable to these allowances except as modified below:
- 1.2 Allowance shall be included in the bid amount. Allowance amounts shall be for actual costs and quantity of materials required. Manufacturer's invoices shall be submitted to confirm material cost. Any unused allowance amounts will be returned to the Owner by Change Order at the completion of the project.
  - A. Make a cash allowance of \$9,000 for electrified hardware accessories and access control interface components not specifically scheduled, including power supplies, relays, interface boards, cabling terminations, miscellaneous mounting accessories, and coordination required for complete operational electrified hardware systems at three openings.

- END OF SECTION -

Hardware Set No. 1				
QTY	DESCRIPTION	CATALOG NUMBER	FINISH	MFR
1 EA	Privacy Lock w/ Occupancy Indicator	ND40S RHO OS-OCC	626	SCH
1 EA	Wall Stop	WS406/407CCV	US32D	IVE
1 EA	Kick Plate	8400 10" x 4" LDW B-CS	US32D	IVE
1 EA	Mop Plate	8400 10" x 2" LDW B-CS	US32D	IVE
3 EA	Silencer	SR64 GRV	—	IVE

- Notes**
- Existing hinges, closer, and remaining hardware to remain unless noted otherwise.
  - Contractor shall verify door thickness and preparation prior to ordering hardware.

Hardware Set No. 2				
QTY	DESCRIPTION	CATALOG NUMBER	FINISH	MFR
3 EA	Hinge	5BB1	652	IVE
1 EA	Privacy Lock w/ Occupancy Indicator	ND40S RHO OS-OCC	626	SCH
1 EA	Surface Closer	1461 RWIPA ST-163 TBSRT	689	LCN
1 EA	Kick Plate	8400 10" x 4" LDW B-CS	US32D	IVE
1 EA	Mop Plate	8400 10" x 2" LDW B-CS	US32D	IVE
1 EA	Wall Stop	WS406/407CCV	US32D	IVE
3 EA	Silencer	SR64 GRV	—	IVE

Hardware Set No. 3				
QTY	DESCRIPTION	CATALOG NUMBER	FINISH	MFR
3 EA	Heavy Weight Hinge	5BB1HW	652	IVE
1 EA	Electrified Panic Hardware	LD-RX-LC-99-EO-SNB	US26D	VON
1 EA	Electrified Exit Device Trim (By Owner)	AD-300-993R-70-MT-RHO-J	626	SCE
1 EA	Rim Cylinder	20-057 ICX	626	SCH
1 EA	Interchangeable Core (By Owner)	23-030 CKC EV29 T	626	SCH
1 EA	Surface Closer	4040XP SCUSH TBSRT	689	LCN
1 EA	Power Transfer	EPT10	SP28	VON
1 EA	Kick Plate	8400 10" x 4" LDW B-CS	US32D	IVE
1 EA	Electronic Horn/Strobe	L1910S-1	—	SCE
3 EA	Silencer	SR64 GRV	—	IVE

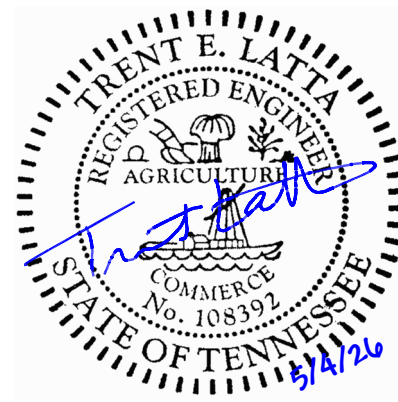
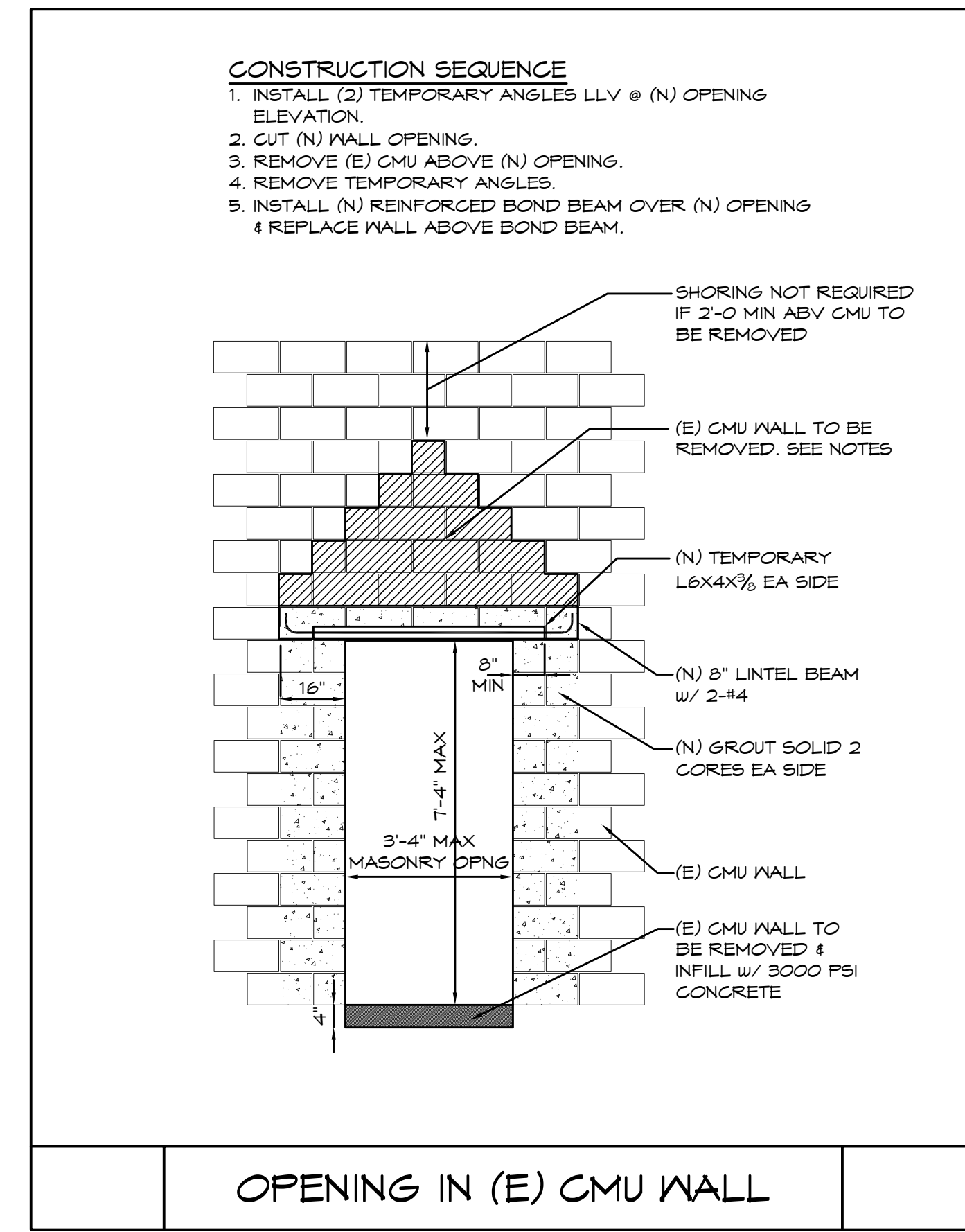
**DESCRIPTION OF OPERATION:**  
 --DOORS NORMALLY CLOSED, LATCHED, AND LOCKED  
 --VALID CREDENTIAL AT ELECTRONIC EXIT TRIM UNLOCKS OUTSIDE LEVER ALLOWING DOOR TO BE OPENED. LEVER RELOCKS AFTER PRESET TIME DELAY.  
 --MECHANICAL KEY IN EXIT TRIM RETRACTS LATCH ALLOWING DOOR TO BE OPENED. LATCH RELOCKS WHEN KEY IS REMOVED.  
 --REQUEST TO EXIT IN EXIT BAR SHUNTS DOOR POSITION SWITCH AND REPORTS UNAUTHORIZED EGRESS TO ACCESS CONTROL SYSTEM AND SOUNDS HORN/STROBE  
 --VALID CREDENTIAL AT CARD READER RESETS HORN/STROBE  
 --FREE EGRESS AT ALL TIMES

Hardware Set No. 4				
QTY	DESCRIPTION	CATALOG NUMBER	FINISH	MFR
6 EA	Heavy Weight Hinge	5BB1HW	652	IVE
2 EA	Electrified Panic Hardware	LD-RX-LC-99-EO-SNB	US26D	VON
2 EA	Electrified Exit Device Trim (By Owner)	AD-300-993R-70-MT-RHO-J	626	SCE
2 EA	Rim Cylinder	20-057 ICX	626	SCH
2 EA	Interchangeable Core (By Owner)	23-030 CKC EV29 T	626	SCH
2 EA	Surface Closer	4040XP SCUSH TBSRT	689	LCN
2 EA	Power Transfer	EPT10	SP28	VON
2 EA	Kick Plate	8400 10" x 4" LDW B-CS	US32D	IVE
2 EA	Electronic Horn/Strobe	L1910S-1	—	SCE
6 EA	Silencer	SR64 GRV	—	IVE

**DESCRIPTION OF OPERATION:**  
 --DOORS NORMALLY CLOSED, LATCHED, AND LOCKED  
 --VALID CREDENTIAL AT ELECTRONIC EXIT TRIM UNLOCKS OUTSIDE LEVER ALLOWING DOOR TO BE OPENED. LEVER RELOCKS AFTER PRESET TIME DELAY.  
 --MECHANICAL KEY IN EXIT TRIM RETRACTS LATCH ALLOWING DOOR TO BE OPENED. LATCH RELOCKS WHEN KEY IS REMOVED.  
 --REQUEST TO EXIT IN EXIT BAR SHUNTS DOOR POSITION SWITCH AND REPORTS UNAUTHORIZED EGRESS TO ACCESS CONTROL SYSTEM AND SOUNDS HORN/STROBE  
 --VALID CREDENTIAL AT CARD READER RESETS HORN/STROBE  
 --FREE EGRESS AT ALL TIMES

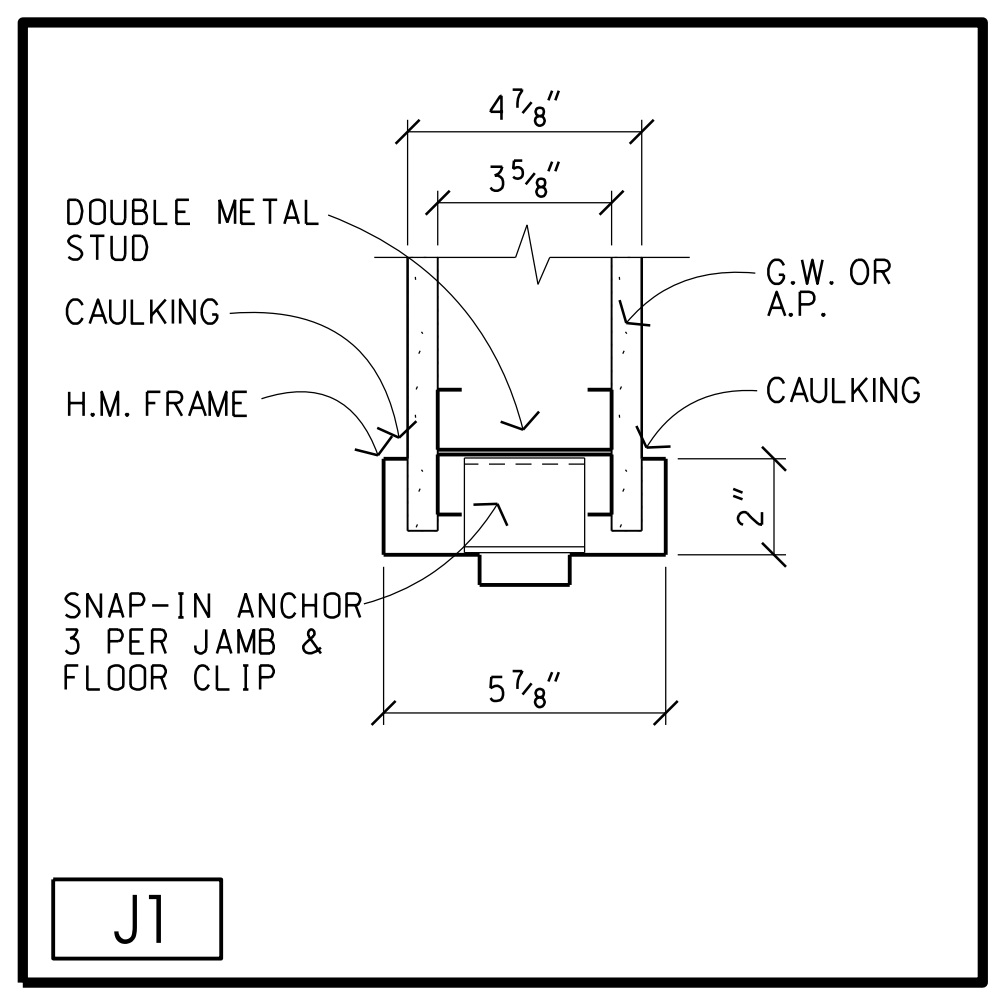
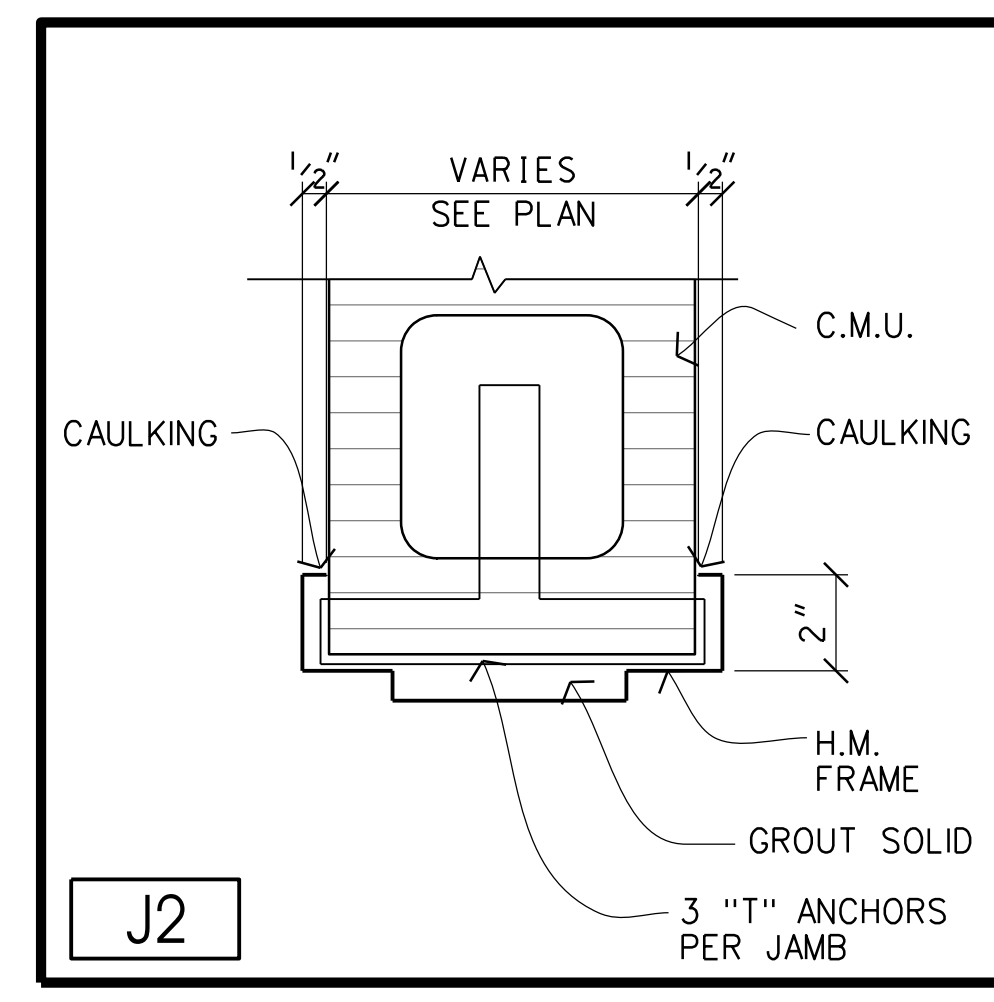
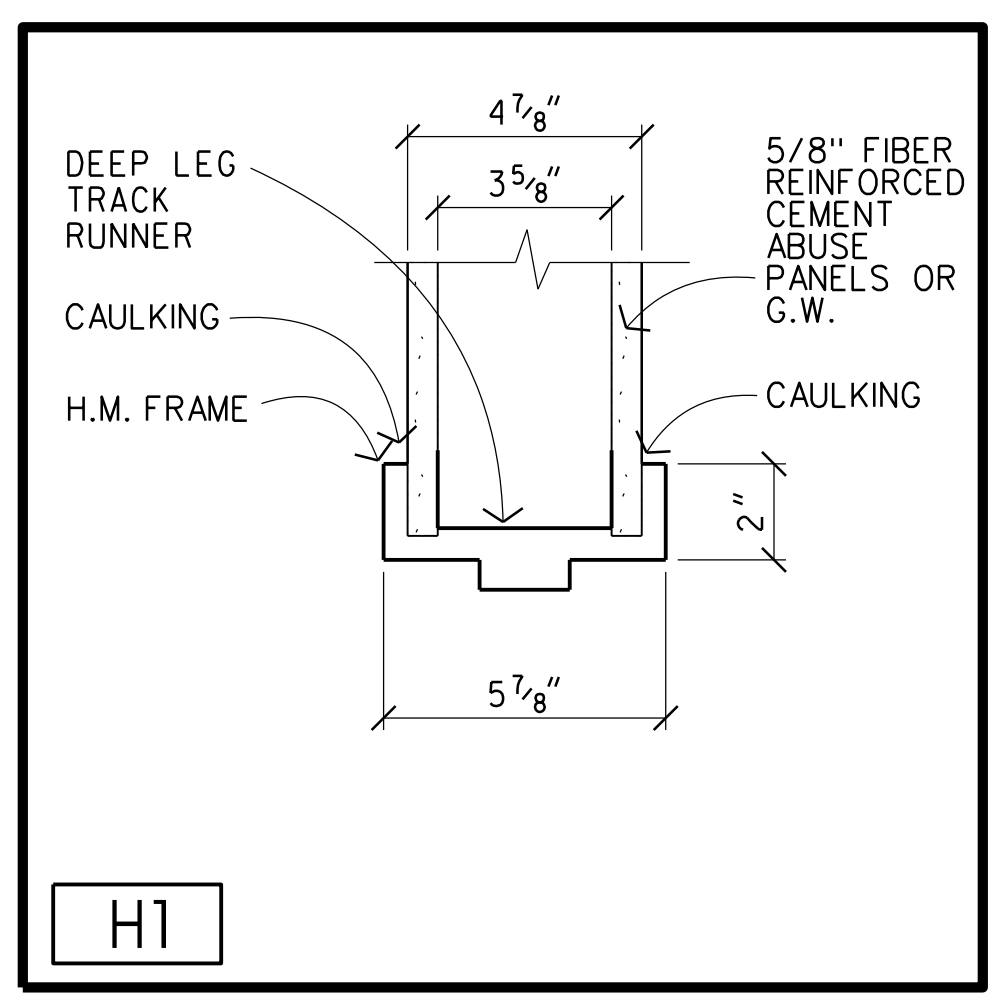
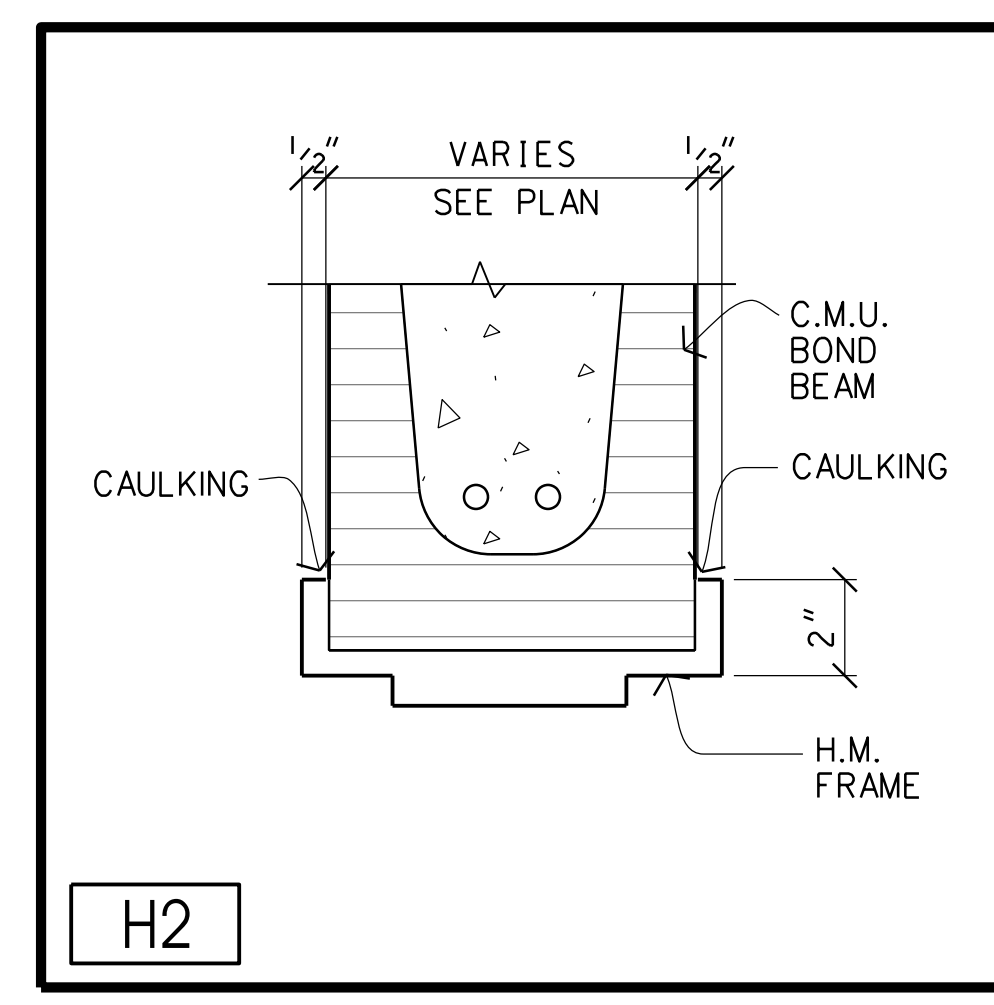
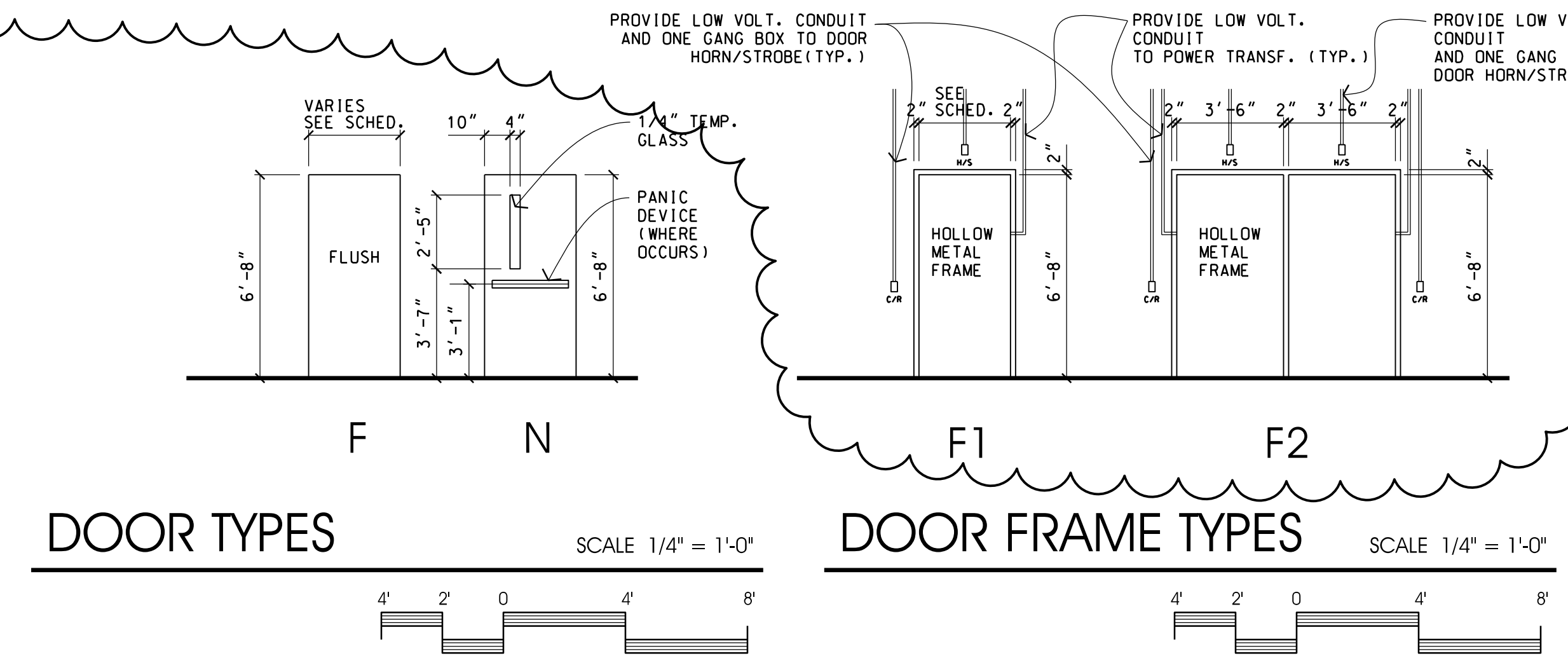
Hardware Set No. 5				
QTY	DESCRIPTION	CATALOG NUMBER	FINISH	MFR
3 EA	Hinge	5BB1	652	IVE
1 EA	Passage Set	ND10S RHO	626	SCH
1 EA	Kick Plate	8400 10" x 4" LDW B-CS	US32D	IVE
3 EA	Silencer	SR64 GRV	—	IVE

- GENERAL DOOR HARDWARE NOTES**
- GC to verify new and existing door locking / latching hardware meet the following requirements:
- Hardware must be able to be operated on the egress side without the use of keys, tools, special knowledge, or effort. Note: Double-key locks are acceptable in some applications.
  - Hardware must be able to be operated on the egress side without tight grasping, pinching, or twisting of the wrist. Note: Thumb-turn locks generally do not meet this requirement unless they are specifically designed as ADA approved locks.
  - Doors must be able to be unlocked and unlatched with one operation from the egress side. Note: Many mag-lock installations do not meet this requirement.
  - Door hardware must be installed 34-inches to 48-inches above the floor.
  - Where doors serve an occupant load above 49 (IBC) / 99 (LSC), door locking/ latching hardware must be panic-type hardware.
  - For double-door, inoperable leaves must not have hardware which could be mistaken for operating hardware.
  - Locking / latching hardware must meet all code requirements before a CO / TCO will be approved.

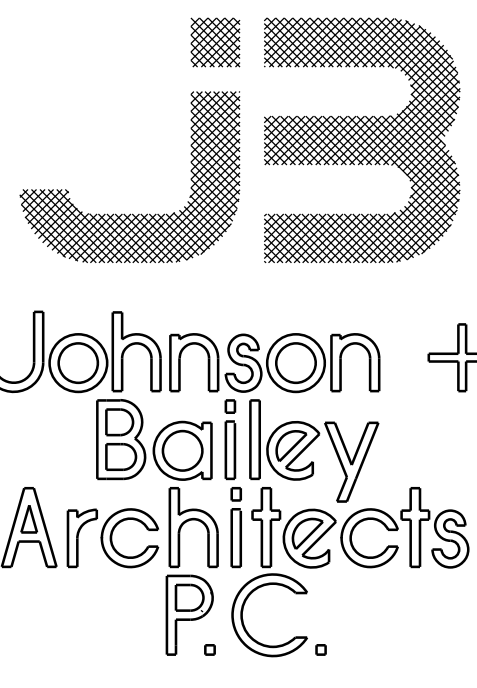


STRUCTURAL DETAIL @ NEW DOOR OPENING 1  
 NTS A9.2

DOOR SCHEDULE																			
DOOR NUMBER	DOOR						DETAIL			FRAME				NOTES					
	PAIR	TYPE	WIDTH	HEIGHT	THICKNESS	METAL	ALUMINUM	WOOD W/ WOOD VENEER	JAMB	HEAD	SILL	WALL THICKNESS	TYPE		HOLLOW MTL.	ALUMINUM	WOOD	THRESHOLD	HARDWARE SET #
<b>NEW CONSTRUCTION</b>																			
D-9	**	N	7'-0"	6'-8"	1 3/4"			**	J1	H1		4 7/8"	F2	**				4	
D-11B		N	3'-0"	6'-8"	1 3/4"			**	J1	H1		4 7/8"	F1	**				5	
D-14		N	3'-6"	6'-8"	1 3/4"			**	J1	H1		4 7/8"	F1	**			3		
D-18		F	3'-0"	6'-8"	1 3/4"			**	J2	H2		7 5/8"	F1	**			2	20 MIN	20 MIN. DOOR AND FRAME TO MATCH EXISTING
D-19		EXISTING	3'-0"	6'-8"	1 3/4"			**					EX	**			1	20 MIN	



DOOR DETAILS  
 SCALE 3/8" = 1'-0"



City Center  
 100 East Vine St.  
 Murfreesboro Tennessee  
 37130  
 615-890-4560  
 Fax: 615-890-4564

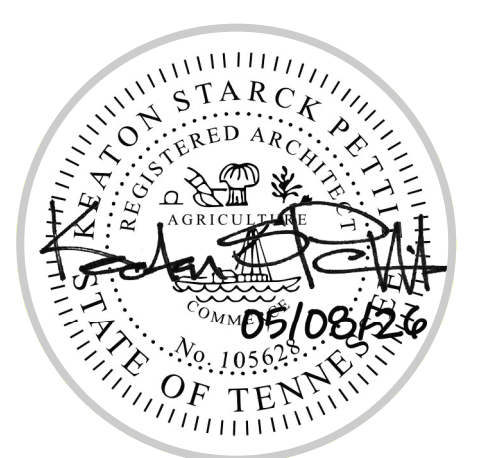
Special Education  
 Alterations to  
 Centennial  
 High School

Williamson County Schools

REVISION	DATE
1. ADDENDUM #1	05-04-26
2. ADDENDUM #2	05-08-26

NOTES:

THIS DRAWING SHALL NOT BE REPRODUCED, PUBLISHED, OR USED IN ANY WAY WITHOUT THE WRITTEN PERMISSION OF THE ARCHITECT.



PROJECT NO. 2519  
 DATE 03-10-26  
 DRAWN BY C.L.C.  
 CHECKED BY K.S.P.

A9.2