



**genesis engineering group, llc**  
 134 4th avenue north  
 franklin, tn 37064  
 615.628.7270  
 www.geneng.net

Addendum Number	Issue Date
1	May 20, 2026
Project	Project Number
WCS RPB #1407 Williamson County Schools Franklin HS Shower Rehab and Restoration	Genesis 26-039-TN

The following items reflect modifications made to the Bid Documents for the above referenced project dated 05 May, 2026.

All bidders must acknowledge receipt of this information in the appropriate location on the Bid Form at the time and date of the bid.

**DRAWINGS:**

- A1.01 FLOOR PLAN & DETAILS**  
 Added floor transition detail 06/A101.  
 Tagged section detail on floor plan 03/A101.

**SPECIFICATIONS:**

- 00 72 13 AIA DOCUMENT A201 – 2017 GENERAL CONDITIONS OF THE CONTRACT FOR CONSTRUCTION**  
 Replace specification section in its entirety
- 00 73 00 GENERAL EXECUTION, CUTTING, & PATCHING**  
 Add specification section in its entirety

**PRE-BID QUESTIONS/CLARIFICATIONS:**

*Q: Is Specification Section 00 41 14 (List of Subcontractors) to be used as the bid envelope (with MEP and Masonry listed) or is it supposed to be filled out and inserted into a bid envelope?*

A: Yes, Specification Section 00 41 14 is to be used as the bid envelope cover. If additional pages are required, check the appropriate line and include the additional pages within the bid envelope.

*Q: For this project, are we going to need any temporary barriers for the locker room or will we have full access to the area without students moving through the space? I know the plan would be to do the work with no students present but I wanted to confirm we didn't need to account for this.*

A: There will be students and activities in the school throughout the summer. The contractor is responsible for the security and safety of the construction area. WCS will not provide a barrier.

CLARIFICATION: The contractor shall not knowingly utilize the service of illegal immigrants.

CLARIFICATION: Nothing contained in the commissioned A+E RFB documents or amendments thereto shall eliminate or reduce the requirements contained in the legal advertisement or in the invitation to bid.

Distribution  
 Distribution List/Meeting Attendees/Owner

Prepared by  
 Daniel Schafran, PE

Date issued  
 05/20/26



## SECTION 01 73 00

### GENERAL EXECUTION, CUTTING, AND PATCHING

#### PART 1 - GENERAL

##### 1.1 RELATED DOCUMENTS

- A. Drawings and general provisions of the Contract, including General and Supplementary Conditions and other Division 01 Specification Sections, apply to this Section.

##### 1.2 SUMMARY

- A. Section includes general administrative and procedural requirements governing execution of the Work including, but not limited to, the following:
  - 1. Construction layout.
  - 2. Installation of the Work.
  - 3. Cutting and patching.
  - 4. Progress cleaning.
  - 5. Starting and adjusting.
  - 6. Protection of installed construction.
  - 7. Correction of the Work.
- B. Related Requirements:
  - 1. Division 01 Section "Summary" for limits on use of Project site.
  - 2. Division 02 Section "Selective Demolition" for demolition and removal of selected portions of the building.
  - 3. Division 07 Section "Penetration Firestopping" for patching penetrations in fire-rated construction.

##### 1.3 DEFINITIONS

- A. Cutting: Removal of in-place construction necessary to permit installation or performance of other work.
- B. Patching: Fitting and repair work required to restore construction to original conditions after installation of other work.

##### 1.4 INFORMATIONAL SUBMITTALS

- A. Cutting and Patching Plan: Submit plan describing procedures at least 10-days prior to the time cutting and patching will be performed. Include the following information:

1. Extent: Describe reason for and extent of each occurrence of cutting and patching.
2. Changes to In-Place Construction: Describe anticipated results. Include, if necessary, any proposed changes to structural elements and operating components as well as changes in building appearance and other significant visual elements.
3. Products: List products to be used for patching and firms or entities that will perform patching work.
4. Dates: Indicate when cutting and patching will be performed.
5. Utilities and Mechanical and Electrical Systems: List services and systems that cutting and patching procedures will disturb or affect. Indicate length of time permanent services and systems will be disrupted. Comply with all requirements for notification and owner occupancy contained in Section 01 10 00.
  - a. Include description of provisions for any temporary services and systems during interruption of permanent services and systems.

## 1.5 QUALITY ASSURANCE

- A. Cutting and Patching: Comply with requirements for and limitations on cutting and patching of construction elements.
  1. Structural Elements: When cutting and patching structural elements, notify Designer of locations and details of cutting and await directions from Designer before proceeding. Shore, brace, and support structural elements during cutting and patching. Do not cut and patch structural elements in a manner that could change their load-carrying capacity or increase deflection
  2. Operational Elements: Do not cut and patch operating elements and related components in a manner that results in reducing their capacity to perform as intended or that result in increased maintenance or decreased operational life or safety. Operational elements include but are not limited to the following:
    - a. Primary operational systems and equipment.
    - b. Fire separation assemblies.
    - c. Air or smoke barriers.
    - d. Fire-suppression systems.
    - e. Mechanical systems piping and ducts.
    - f. Control systems.
    - g. Communication systems.
    - h. Fire-detection and -alarm systems.
    - i. Conveying systems.
    - j. Electrical wiring systems.
    - k. Operating systems of special construction.
  3. Other Construction Elements: Do not cut and patch other construction elements or components in a manner that could change their load-carrying capacity, that results in reducing their capacity to perform as intended, or that results in

increased maintenance or decreased operational life or safety. Other construction elements include but are not limited to the following:

- a. Water, moisture, or vapor barriers.
  - b. Membranes and flashings.
  - c. Exterior curtain-wall construction.
  - d. Sprayed fire-resistive material.
  - e. Equipment supports.
  - f. Piping, ductwork, vessels, and equipment.
  - g. Noise- and vibration-control elements and systems.
4. Visual Elements: Do not cut and patch construction in a manner that results in visual evidence of cutting and patching. Do not cut and patch exposed construction in a manner that would, in Designer's opinion, reduce the building's aesthetic qualities. Remove and replace construction that has been cut and patched in a visually unsatisfactory manner.
- B. Cutting and Patching Conference: Before proceeding, meet at Project site with parties involved in cutting and patching, including mechanical and electrical trades. Review areas of potential interference and conflict. Coordinate procedures and resolve potential conflicts before proceeding.
- C. Manufacturer's Installation Instructions: Obtain and maintain on-site manufacturer's written recommendations and instructions for installation of products and equipment.

## **PART 2 - PRODUCTS**

### **2.1 MATERIALS**

- A. General: Comply with requirements specified in other Sections.
- B. In-Place Materials: Use materials for patching identical to in-place materials. For exposed surfaces, use materials that visually match in-place adjacent surfaces to the fullest extent possible.
1. If identical materials are unavailable or cannot be used, use materials that, when installed, will provide a match acceptable to Designer for the visual and functional performance of in-place materials.

## **PART 3 - EXECUTION**

### **3.1 EXAMINATION**

- A. Examination and Acceptance of Conditions: Before proceeding with each component of the Work, examine substrates, areas, and conditions, with Installer or Applicator present where indicated, for compliance with requirements for installation tolerances and other conditions affecting performance. Record observations.

1. Examine roughing-in for mechanical and electrical systems to verify actual locations of connections before equipment and fixture installation.
  2. Examine walls, floors, and roofs for suitable conditions where products and systems are to be installed.
  3. Verify compatibility with and suitability of substrates, including compatibility with existing finishes or primers.
- B. Written Report: Where a written report listing conditions detrimental to performance of the Work is required by other Sections, include the following:
1. Description of the Work.
  2. List of detrimental conditions, including substrates.
  3. List of unacceptable installation tolerances.
  4. Recommended corrections.
- C. Proceed with installation only after unsatisfactory conditions have been corrected. Proceeding with the Work indicates acceptance of surfaces and conditions.

### 3.2 PREPARATION

- A. Field Measurements: Take field measurements as required to fit the Work properly. Recheck measurements before installing each product. Where portions of the Work are indicated to fit to other construction, verify dimensions of other construction by field measurements before fabrication. Coordinate fabrication schedule with construction progress to avoid delaying the Work.
- B. Space Requirements: Verify space requirements and dimensions of items shown diagrammatically on Drawings.
- C. Review of Contract Documents and Field Conditions: Immediately on discovery of the need for clarification of the Contract Documents caused by differing field conditions outside the control of Contractor, submit a request for information to Designer according to requirements in Division 01.

### 3.3 CONSTRUCTION LAYOUT

- A. Verification: Before proceeding to lay out the Work, verify layout information shown on Drawings, in relation to existing conditions. If discrepancies are discovered, notify Designer promptly.

### 3.4 INSTALLATION

- A. General: Locate the Work and components of the Work accurately, in correct alignment and elevation, as indicated.
1. Make vertical work plumb and make horizontal work level.
  2. Where space is limited, install components to maximize space available for maintenance and ease of removal for replacement.
  3. Conceal pipes, ducts, and wiring in finished areas unless otherwise indicated.

- B. Comply with manufacturer's written instructions and recommendations for installing products in applications indicated.
- C. Install products at the time and under conditions that will ensure the best possible results. Maintain conditions required for product performance until Substantial Completion.
- D. Conduct construction operations so no part of the Work is subjected to damaging operations or loading in excess of that expected during normal conditions of occupancy.
- E. Sequence the Work and allow adequate clearances to accommodate movement of construction items on site and placement in permanent locations.
- F. Tools and Equipment: Do not use tools or equipment that produce harmful noise levels or that inhibit owner occupancy as defined in Section 01 10 00.
- G. Templates: Obtain and distribute to the parties involved templates for work specified to be factory prepared and field installed. Check Shop Drawings of other work to confirm that adequate provisions are made for locating and installing products to comply with indicated requirements.
- H. Attachment: Provide blocking and attachment plates and anchors and fasteners of adequate size and number to securely anchor each component in place, accurately located and aligned with other portions of the Work.
  - 1. Allow for building movement, including thermal expansion and contraction.
  - 2. Coordinate installation of anchorages. Furnish setting drawings, templates, and directions for installing anchorages, including sleeves, concrete inserts, anchor bolts, and items with integral anchors, that are to be permanently attached to existing concrete or masonry. Deliver such items to Project site in time for installation.
- I. Joints: Make joints of uniform width. Where joint locations in exposed work are not indicated, arrange joints for the best visual effect. Fit exposed connections together to form hairline joints.
- J. Hazardous Materials: Use products, cleaners, and installation materials that are not considered hazardous. If existing hazardous materials are encountered, comply with Section 02 82 33 and Section 02 84 00 for proper handling, removal, disposal, and/or replacement.

### 3.5 CUTTING AND PATCHING

- A. Cutting and Patching:
  - 1. Comply with all provisions of Section 02 41 19 "Selective Demolition".
  - 2. Employ skilled workers to perform cutting and patching. Proceed with cutting and patching at the earliest feasible time, and complete without delay.

3. Cut in-place construction to provide for installation of other components or performance of other construction, and subsequently patch as required to restore surfaces to their original condition.
- B. Existing Warranties: Remove, replace, patch, and repair materials and surfaces cut or damaged during installation or cutting and patching operations, by methods and with materials so as not to void existing warranties.
- C. Temporary Support: Provide temporary support of work to be cut.
- D. Protection: Protect in-place construction during cutting and patching to prevent damage. Provide protection from adverse weather conditions for portions of Project that might be exposed during cutting and patching operations.
- E. Adjacent Occupied Areas: Where interference with use of adjoining areas or interruption of free passage to adjoining areas is unavoidable, coordinate cutting and patching according to requirements in Section 01 10 00.
- F. Existing Utility Services and Mechanical/Electrical Systems: Where existing services/systems are required to be removed, relocated, or abandoned, bypass such services/systems before cutting to minimize interruption to occupied areas. Interruption of any utilities and/or systems shall be coordinated with the Owner prior to start of the work and in compliance with the requirements in Section 01 10 00.
- G. Cutting: Cut in-place construction by sawing, drilling, breaking, chipping, grinding, and similar operations, including excavation, using methods least likely to damage elements retained or adjoining construction. If possible, review proposed procedures with original Installer; comply with original Installer's written recommendations.
  1. In general, use hand or small power tools designed for sawing and grinding, not hammering and chopping. Cut holes and slots neatly to minimum size required, and with minimum disturbance of adjacent surfaces. Temporarily cover openings when not in use.
  2. Finished Surfaces: Cut or drill from the exposed or finished side into concealed surfaces.
  3. Concrete and Masonry: Cut using a cutting machine, such as an abrasive saw or a diamond-core drill.
  4. Mechanical and Electrical Services: Cut off pipe or conduit in walls or partitions to be removed. Cap, valve, or plug and seal remaining portion of pipe or conduit to prevent entrance of moisture or other foreign matter after cutting.
  5. Proceed with patching after construction operations requiring cutting are complete.
- H. Patching: Patch construction by filling, repairing, refinishing, closing up, and similar operations following performance of other work. Patch with durable seams that are as invisible as practicable. Provide materials and comply with installation requirements specified in other Sections, where applicable.

1. Inspection: Where feasible, test and inspect patched areas after completion to demonstrate physical integrity of installation.
  2. Exposed Finishes: Restore exposed finishes of patched areas and extend finish restoration into retained adjoining construction in a manner that will minimize evidence of patching and refinishing.
    - a. Clean piping, conduit, and similar features before applying paint or other finishing materials.
    - b. Restore damaged pipe covering to its original condition.
  3. Floors and Walls: Where walls or partitions that are removed extend one finished area into another, patch and repair floor and wall surfaces in the new space. Provide an even surface of uniform finish, color, texture, and appearance. Remove in-place floor and wall coverings and replace with new materials, if necessary, to achieve uniform color and appearance.
    - a. Where patching occurs in a painted surface, prepare substrate and apply primer and intermediate paint coats appropriate for substrate over the patch, and apply final paint coat over entire unbroken surface containing the patch. Provide additional coats until patch blends with adjacent surfaces.
  4. Ceilings: Patch, repair, or rehang in-place ceilings as necessary to provide an even-plane surface of uniform appearance.
  5. Exterior Building Enclosure: Patch components in a manner that restores enclosure to a weathertight condition and ensures thermal and moisture integrity of building enclosure.
- I. Cleaning: Clean areas and spaces where cutting and patching are performed. Remove paint, mortar, oils, putty, and similar materials from adjacent finished surfaces.

### 3.6 PROGRESS CLEANING

- A. General: Clean Project site and work areas daily, including common areas. Enforce requirements strictly. Dispose of materials lawfully.
1. Comply with requirements in NFPA 241 for removal of combustible waste materials and debris.
  2. Do not hold waste materials more than seven days during normal weather or three days if the temperature is expected to rise above 80 deg F (27 deg C).
  3. Containerize hazardous and unsanitary waste materials separately from other waste. Mark containers appropriately and dispose of legally, according to regulations and in full compliance with Section 02 82 33 and Section 02 84 00 of these documents.
  4. Coordinate progress cleaning for joint-use areas where Contractor and other contractors are working concurrently.
- B. Site: Maintain Project site free of waste materials and debris.

- C. Work Areas: Clean areas where work is in progress to the level of cleanliness necessary for proper execution of the Work.
  - 1. Remove liquid spills promptly.
  - 2. Where dust would impair proper execution of the Work, broom-clean or vacuum the entire work area, as appropriate.
- D. Installed Work: Keep installed work clean. Clean installed surfaces according to written instructions of manufacturer or fabricator of product installed, using only cleaning materials specifically recommended. If specific cleaning materials are not recommended, use cleaning materials that are not hazardous to health or property and that will not damage exposed surfaces.
- E. Concealed Spaces: Remove debris from concealed spaces before enclosing the space.
- F. Exposed Surfaces in Finished Areas: Clean exposed surfaces and protect as necessary to ensure freedom from damage and deterioration at time of Substantial Completion.
- G. Waste Disposal: Do not bury or burn waste materials on-site. Do not wash waste materials down sewers or into waterways.
- H. During handling and installation, clean and protect construction in progress and adjoining materials already in place. Apply protective covering where required to ensure protection from damage or deterioration at Substantial Completion.
- I. Clean and provide maintenance on completed construction as frequently as necessary through the remainder of the construction period. Adjust and lubricate operable components to ensure operability without damaging effects.
- J. Limiting Exposures: Supervise construction operations to assure that no part of the construction, completed or in progress, is subject to harmful, dangerous, damaging, or otherwise deleterious exposure during the construction period.

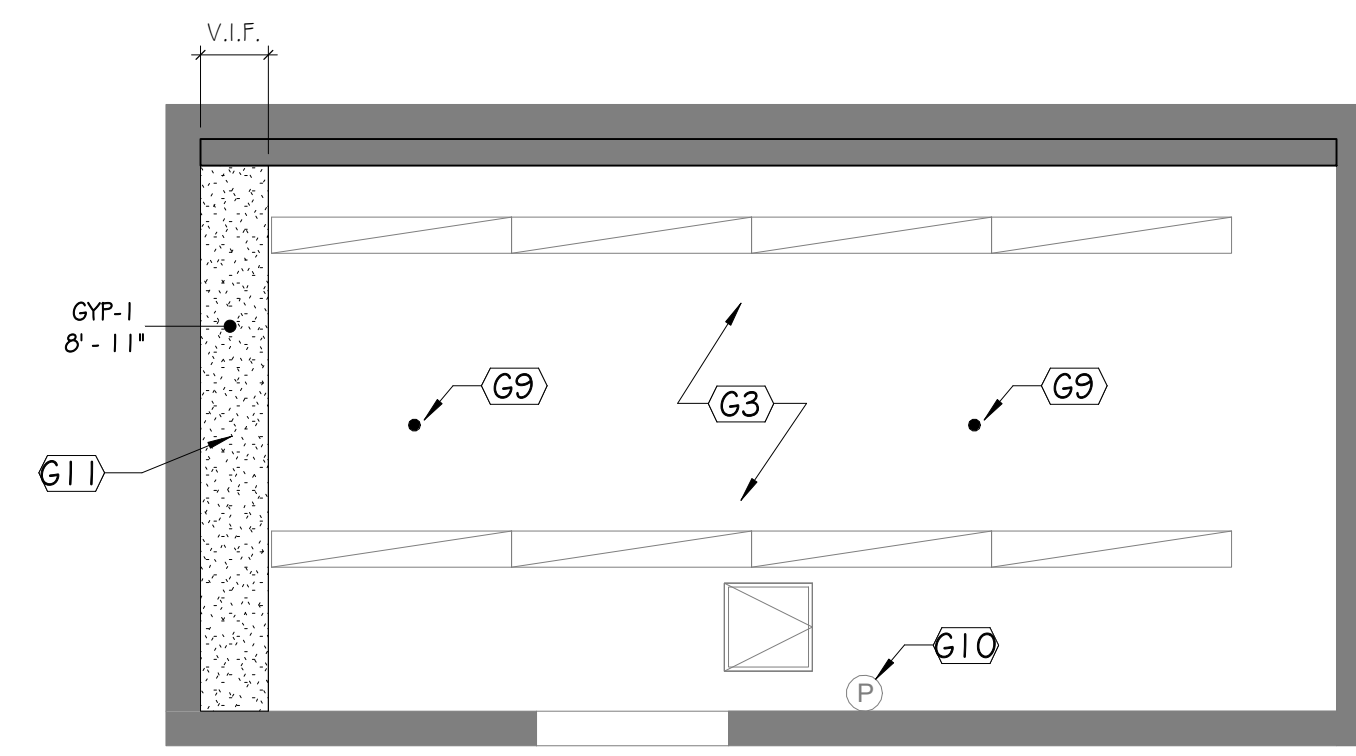
### 3.7 STARTING AND ADJUSTING

- A. Coordinate startup and adjusting of equipment and operating components with requirements in Division 01.
- B. Start equipment and operating components to confirm proper operation. Remove malfunctioning units, replace with new units, and retest.
- C. Adjust equipment for proper operation. Adjust operating components for proper operation without binding.
- D. Test each piece of equipment to verify proper operation. Test and adjust controls and safeties. Replace damaged and malfunctioning controls and equipment.

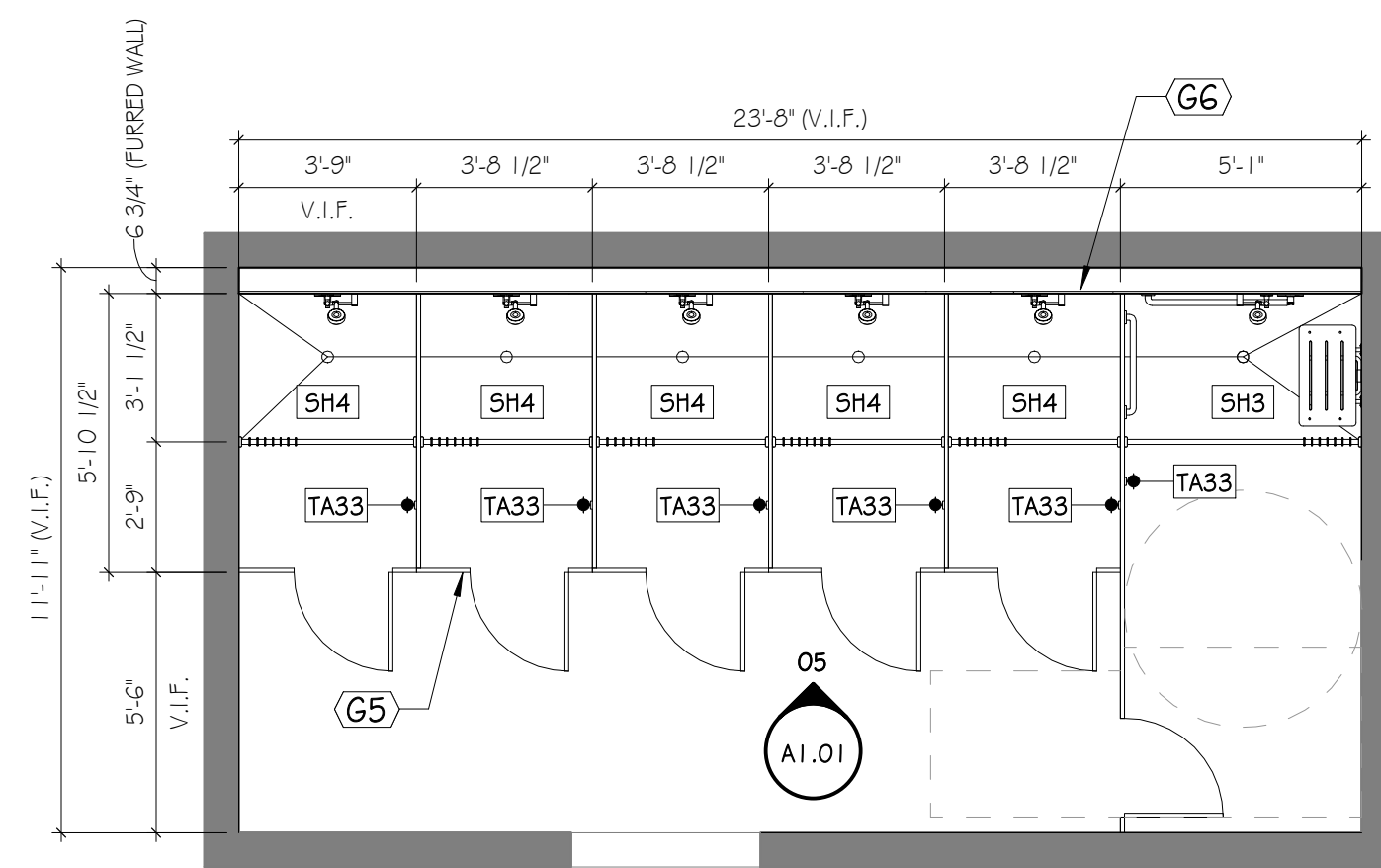
3.8 PROTECTION OF INSTALLED CONSTRUCTION

- A. Provide final protection and maintain conditions that ensure installed Work is without damage or deterioration at time of Substantial Completion.
- B. Comply with manufacturer's written instructions for temperature and relative humidity. Coordinate with owner for limits to temperature and humidity levels for protection of materials in owner occupied areas of the building during construction.

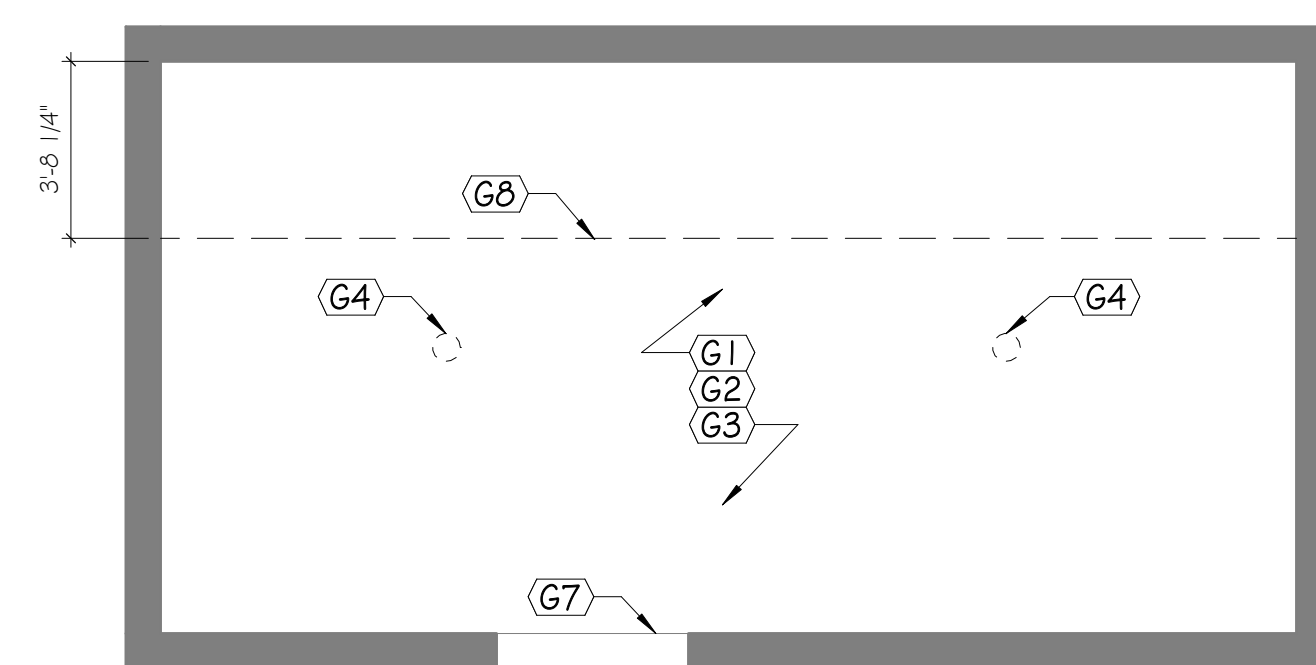
END OF SECTION



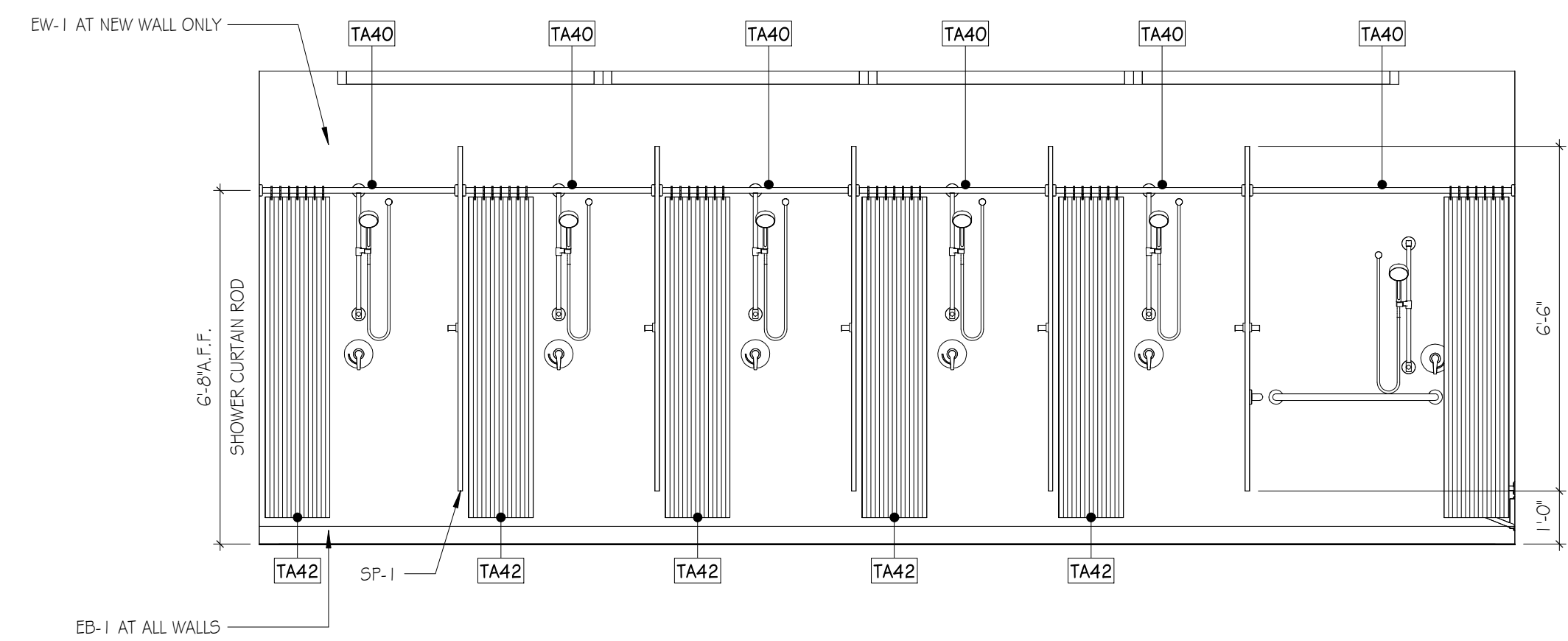
**04 REFLECTED CEILING PLAN**  
SCALE: 1/4" = 1'-0"  
0 2 4 8



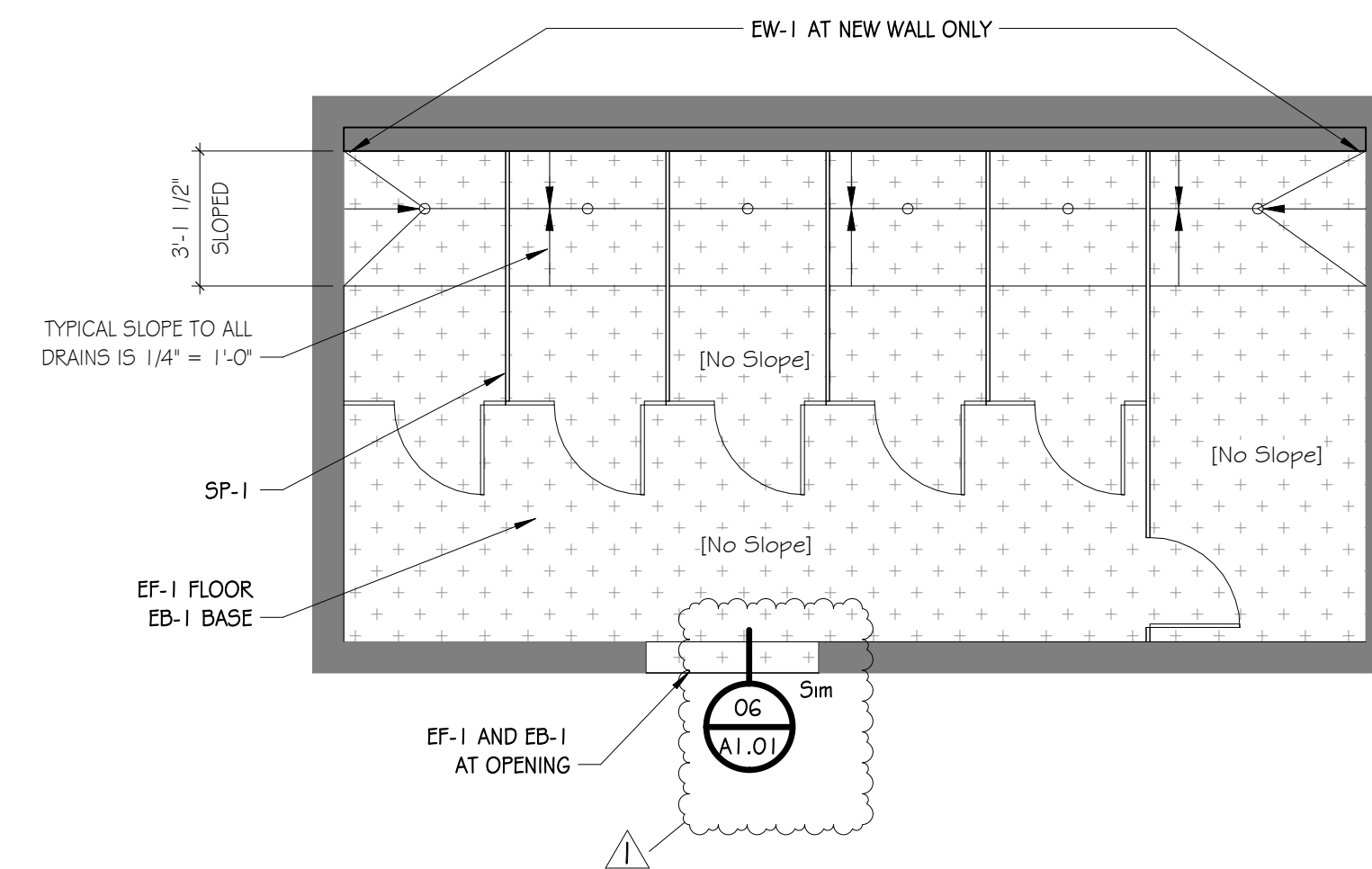
**02 NEW FLOOR PLAN**  
SCALE: 1/4" = 1'-0"  
0 2 4 8



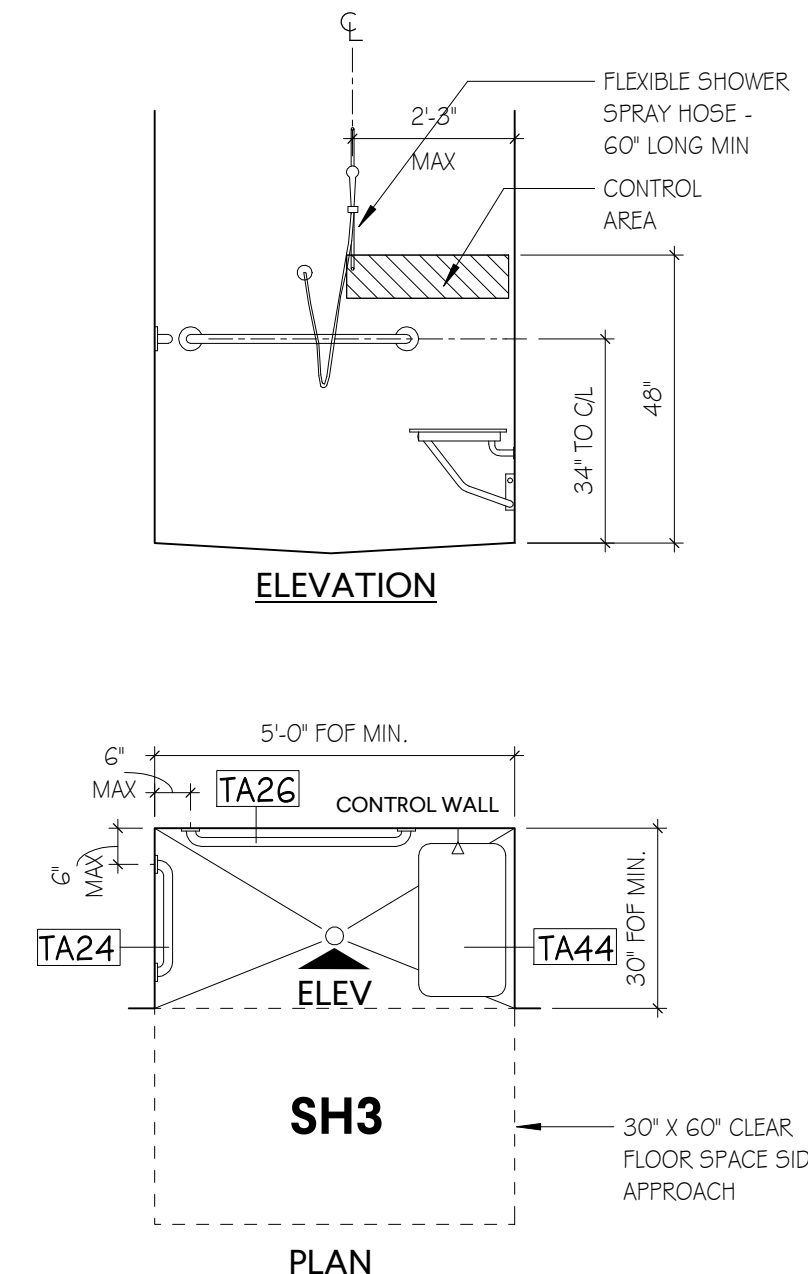
**01 DEMOLITION PLAN**  
SCALE: 1/4" = 1'-0"  
0 2 4 8



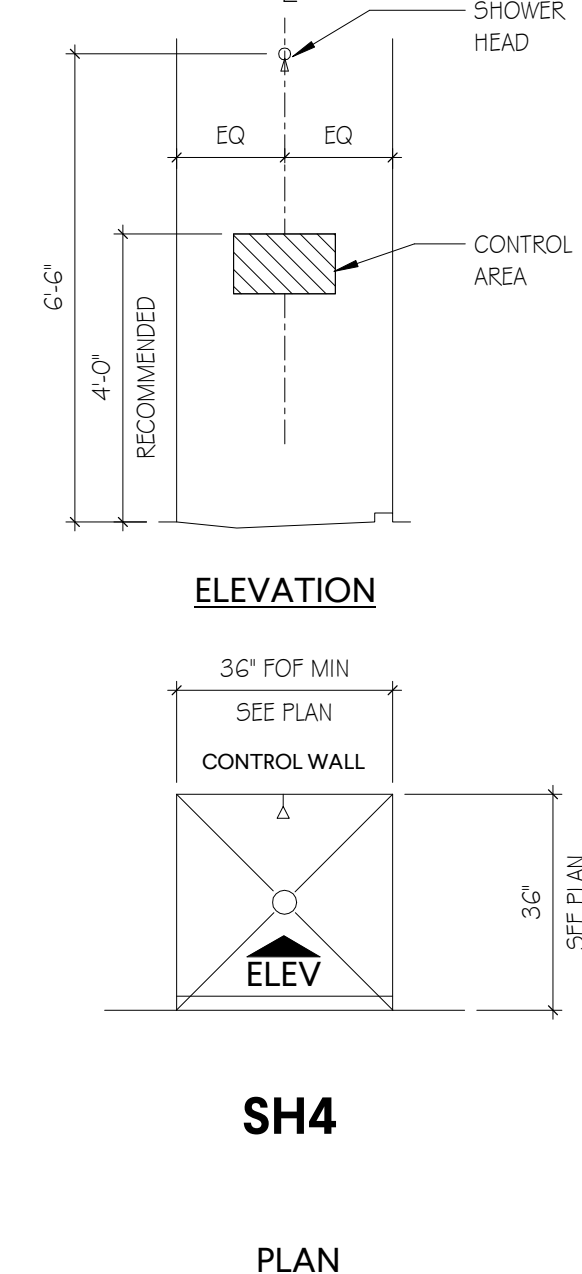
**05 INTERIOR ELEVATION**  
SCALE: 3/8" = 1'-0"  
0 2 4 6



**03 NEW FINISH PLAN**  
SCALE: 1/4" = 1'-0"  
0 2 4 8



**ROLL-IN SHOWER STALL - W/ SHWR. SEAT**  
PLAN DESIGNATION **SH3**



**NON-ACCESSIBLE SHOWER**  
PLAN DESIGNATION **SH4**

**KEY NOTES - GENERAL CONSTRUCTION**

KEY	KEYNOTE
G1	EXISTING FLOOR TO REMAIN. PATCH AND REPAIR FOR NEW FINISH.
G2	EXISTING WALLS TO REMAIN. PROTECT AS REQUIRED DURING NEW CONSTRUCTION.
G3	EXISTING CEILING, ACCESS PANEL, AND LIGHTING TO REMAIN. PROTECT AS REQUIRED DURING NEW CONSTRUCTION.
G4	REMOVE EXISTING SHOWER COLUMN.
G5	NEW SHOWER PARTITIONS.
G6	NEW 6" MTL. STUD FURRING WALL INSTALLED TO CEILING WITH 5/8" CEMENTBOARD. SEE FINISH LEGEND FOR MORE INFORMATION.
G7	GRIND OR REMOVE CONCRETE CURB THRESHOLD TO ALIGN WITH ADJACENT FLOORING SURFACES.
G8	TRENCH FLOOR WHERE REQUIRED FOR NEW PLUMBING WORK AND PREPARE AREA FOR NEW SLOPE. SEE PLUMBING DRAWINGS FOR MORE INFORMATION. PREPARE FLOOR AS REQUIRED FOR NEW CONSTRUCTION.
G9	EXISTING SPRINKLER HEAD TO BE REPLACED WITH NEW. SEE PLUMBING DRAWINGS FOR MORE INFORMATION.
G10	EXISTING WALL-MOUNTED STROBE TO REMAIN. PROTECT AS REQUIRED DURING NEW CONSTRUCTION.
G11	REMOVE EXISTING CEILING WHERE REQUIRED FOR NEW CONSTRUCTION. INSTALL NEW CEILING FINISH TO MATCH EXISTING. SEE PLUMBING DRAWINGS FOR NEW ABOVE-CEILING PIPING LOCATIONS.

**FINISH LEGEND**

FLOOR	NUMBER	TYPE	DETAIL DESCRIPTION
FLOOR	EF-1	EPOXY FLOORING	MANUFACTURER: STONHARD STYLE NAME: STONSHIELD HRI COLOR: TBD FINISH TEXTURE: MEDIUM INSTALLATION: INTEGRATED WALL BASE (EB-1)

BASE	NUMBER	TYPE	DETAIL DESCRIPTION
BASE	EB-1	EPOXY BASE	MANUFACTURER: STONHARD STYLE NAME: STONSHIELD HRI COLOR: TBD SIZE: 4" H INTEGRAL BASE WITH EF-1

WALL	NUMBER	TYPE	DETAIL DESCRIPTION
WALL	EW-1	EPOXY WALL SYSTEM	MANUFACTURER: STONHARD STYLE NAME: STONGLAZE V5E COLOR: TBD INSTALLATION: TO BE INSTALLED ON NEW FURRED SHOWER WALL ONLY. INSTALL PER MANUFACTURER'S RECOMMENDATIONS, WHICH MAY INCLUDE TWO COATS OF EPOXY.
	PT-1	PAINT (CEILING)	MANUFACTURER: SEE SPECIFICATIONS FOR APPROVED MANUFACTURERS. COLOR: MATCH EXISTING

MISC	NUMBER	TYPE	DETAIL DESCRIPTION
MISC	GYP-1	GYP BOARD CEILING	PAINTED GYP BOARD CEILING - MOISTURE RESISTANT COLOR: PT-1
	SP-1	SHOWER PARTITIONS	MANUFACTURER: MANNING MATERIALS, INC. MOUNTED OVERHEAD BRACED COLOR: TBD BRACKET: STAINLESS STEEL, CONTINUOUS

Goodwyn Mills Cawood, LLC  
3310 West End Avenue, Suite 420  
Nashville, TN 37203  
T 615.333.7200  
GMCNETWORK.COM



genesis engineering group, llc.



**GENERAL NOTES - FLOOR PLAN**

- DO NOT SCALE DRAWINGS. IF DIMENSIONS ARE IN QUESTION, THE CONTRACTOR SHALL BE RESPONSIBLE FOR OBTAINING CLARIFICATIONS FROM THE ARCHITECT.
- DIMENSIONS ARE FROM FINISH FACE TO FINISH FACE, U.O.N.
- THE CONTRACTOR SHALL CHECK ALL DIMENSIONS IN FIELD AND REPORT ANY DISCREPANCIES TO THE ARCHITECT PRIOR TO COMMENCEMENT OF WORK.
- WHERE NON-RATED WALLS INTERSECT WITH RATED ASSEMBLIES, THE RATED ASSEMBLY SHALL BE COMPLETE IN ITS ENTIRETY AT THE TIE IN.
- COORDINATE LOCATIONS OF ALL LIGHTS, DIFFUSERS, AND DEVICES BETWEEN ARCHITECTURAL AND MECHANICAL, FIRE PROTECTION, AND ELECTRICAL DRAWINGS. NOTIFY ARCHITECT OF ANY DISCREPANCIES FOUND BEFORE PROCEEDING.
- ALL EXPOSED FERROUS MATERIAL TO BE PRIMED AND PAINTED, U.O.N.
- MISC. FRAMING AND BLOCKING IS A PART OF THE WORK. ALL WOOD BLOCKING TO BE KILN DRY HEAT TREATED (KDHT), AND COORDINATED WITH FINAL REQUIREMENTS.
- TYPICAL WALL REMOVAL INCLUDES FINISHES, AND MECHANICAL, PLUMBING, AND ELECTRICAL ITEMS CONTAINED THEREIN.
- REFER TO MECHANICAL, PLUMBING, AND ELECTRICAL DRAWINGS FOR ITEMS THAT PASS THROUGH CONSTRUCTION THAT ARE BEING DEMOLISHED.
- REFER TO PLUMBING DRAWINGS FOR THE LOCATION AND EXTENT OF CHANNELING OF EXISTING FLOOR SLABS.
- REFER TO MECHANICAL, PLUMBING, AND ELECTRICAL DRAWINGS FOR ADDITIONAL DEMOLITION AND/OR REMOVAL OF UTILITIES, FIXTURES, OR EQUIPMENT. INCLUDE ALL DEMOLITION REQUIRED FOR RENOVATION AND RETROFIT OF SYSTEMS AND EQUIPMENT IN THE EXISTING BUILDING.
- EXERCISE CAUTION IN THE REMOVAL OF EXISTING REUSABLE ITEMS. STORE THE ITEMS AS SPECIFIED. ITEMS NOT REUSED AS PART OF THIS PROJECT SHALL BE OFFERED TO THE OWNER, AND IF NOT REUSED BY THE OWNER, SHALL BE DISPOSED OF BY THE CONTRACTOR.
- IN AREAS WHERE LEVELING OF CONCRETE IS REQUIRED, USE SELF-LEVELING UNDERLAYMENT TO LEVEL SLOPE OF UNEVEN FLOORS.
- EXIT ACCESS, CAPACITY, AND FIRE PROTECTION IS TO BE MAINTAINED AT ALL TIMES.
- CONTRACTOR TO COORDINATE WITH AHJ TO MAINTAIN PROTECTED EGRESS ROUTES THROUGH THE CONSTRUCTION OF THE PROJECT.
- WHERE EXISTING WORK IS REMOVED, ALL SURFACES THAT ARE AFFECTED BY THE REMOVAL OF WORK, WHETHER CALLED OUT TO RECEIVE NEW FINISHES OR NOT, ARE TO BE FINISHED EITHER IN THE SAME MANNER AS ADJACENT SURFACES CALLED OUT TO RECEIVE NEW FINISHES OR IN A NEW FINISH THAT IS COMPLETE AND THOROUGH WITH SMOOTH TRANSITION TO ADJACENT SURFACES.
- FOR SPACES TO BE RENOVATED, CONTRACTOR SHALL COORDINATE WITH THE FACILITY TO DETERMINE ALLOWABLE TIME FRAMES TO DISCONTINUE THE OPERATION OF MECHANICAL, PLUMBING, AND ELECTRICAL SYSTEMS. DO NOT RENDER ANY EXISTING SPACES USELESS BY CUTTING OFF POWER, HEAT, AIR, ETC.

**FINISH NOTES**

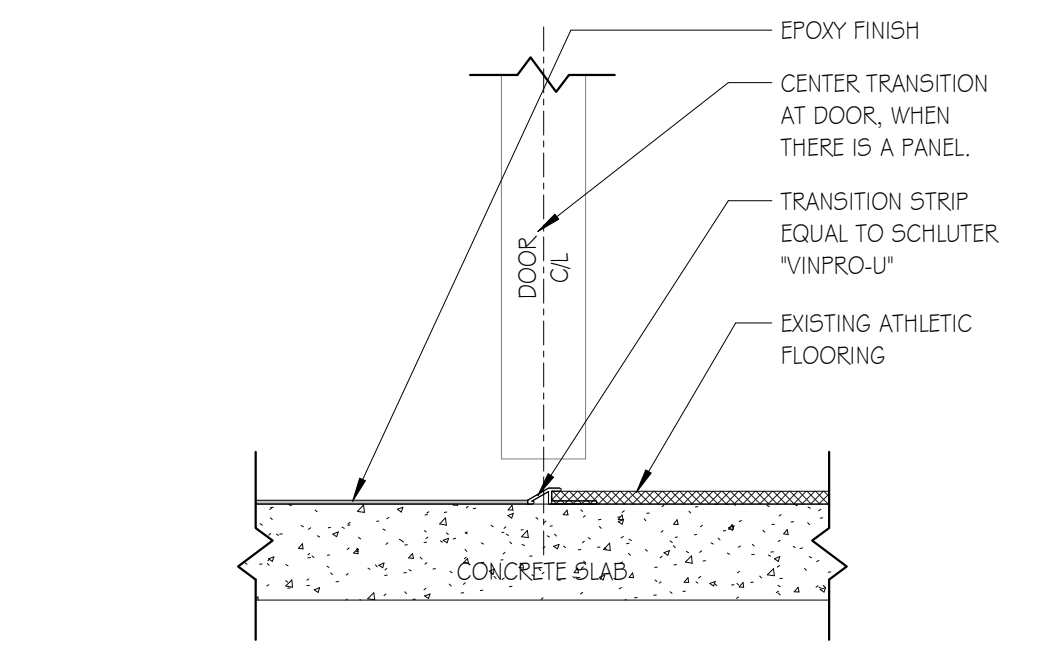
- FLOORS:**
- CONTRACTOR MUST NOTIFY ARCHITECT BEFORE INSTALLATION OF FLOORING TO REVIEW DESIGN INTENT OF FLOOR PATTERN PLAN.
  - ALL FLOORING TRANSITIONS INCLUDING TRANSITIONS TO SIMILAR MATERIAL OR REDUCER STRIPS AND OTHER THRESHOLDS TO DISSIMILAR MATERIAL SHALL BE PROVIDED TO THE ARCHITECT FOR REVIEW. COLORS SHALL BE SELECTED DURING SUBMITTAL REVIEW. CONTRACTOR TO PROVIDE TRANSITION SIZES APPROPRIATE FOR THICKNESS.
- MISC:**
- PROVIDE BLOCKING FOR ALL GRAB BARS AND SHOWER ACCESSORIES.
  - ALL PARTIES RESPONSIBLE FOR DELIVERING FINISHES TO THE SITE SHALL CHECK AVAILABILITY OF QUANTITIES AND DELIVERY DATES UPON NOTICE TO PROCEED. NO CONSIDERATION WILL BE GIVEN FOR FAILURE TO COMPLY WITH THIS REQUIREMENT.

**REFLECTED CEILING PLAN LEGEND**

CEILING FINISHES:	MISC:	MISC:
GYP BOARD - INTERIOR	SUPPLY DIFFUSER	ACCESS PANEL
MECHANICAL	RETURN AIR GRILLE	EXHAUST FAN
LIGHTING	LINEAR FIXTURE	EXIT LIGHT
FIRE ALARM STROBE		

**SHOWER ACCESSORIES SCHEDULE**

TAG	DESCRIPTION
TA24	24" GRAB BAR
TA26	36" HORIZONTAL GRAB BAR
TA33	ROBE HOOK (AT ADA STALL, 48" A.F.F. WITH CLEAR FRONT APPROACH)
TA40	SHOWER CURTAIN ROD
TA42	VINYL SHOWER CURTAIN
TA44	SHOWER SEAT - FOLDING, RECTANGULAR



**06 EPOXY TO RESILIENT**  
SCALE: 3" = 1'-0"  
0 3 6 9

FRANKLIN HIGH SCHOOL SHOWER REHAB AND RENOVATION  
810 HILLSBORO ROAD  
FRANKLIN, TN 37064

NO.	REVISION	DATE
01	ADDENDUM #1	05.20.26

DATE: 05.05.2026  
JOB NUMBER: 26-039-7N  
DRAWN BY:  
CHECKED BY:  
DRAWING TITLE: FLOOR PLAN & DETAILS

DRAWING NO. **A1.01**